

created (date/name): 24.03.2005 S. Ruhl		Label: Download_2200_3300_e.doc
--	--	------------------------------------

Condition for the download of a new firmware into units series 2200 and 3300 :

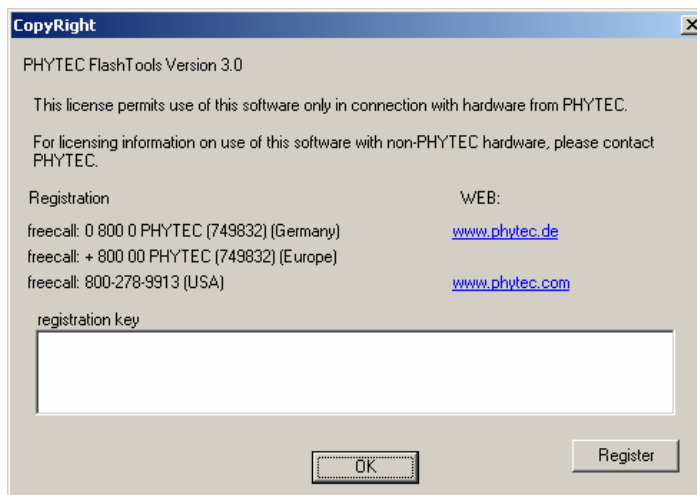
- ◆ PC with WIN98 / 2000 / XP at least one free RS232 ( 9 pin. ) port
- ◆ Connecting cable D-SUB 9pin female / 10 pin. flatcable
- ◆ Installed Software FlashTool 3 Beta

### 1. Start program „FlashTool3“



FlashTools3.Ink

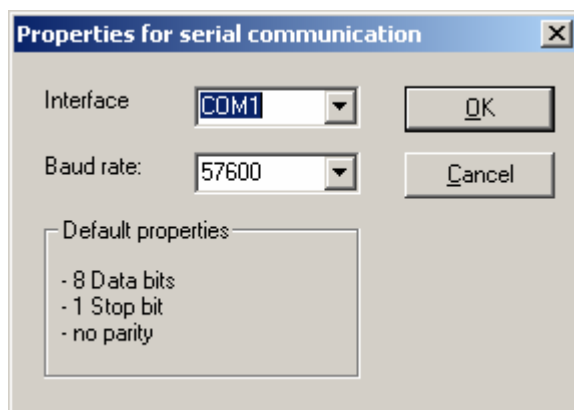
### 2. Registration-Dialog



Without key press OK!

### 3. Configure interface port

Select : Config / Protocol / RS232 / Properties ...



Press OK !

created (date/name):

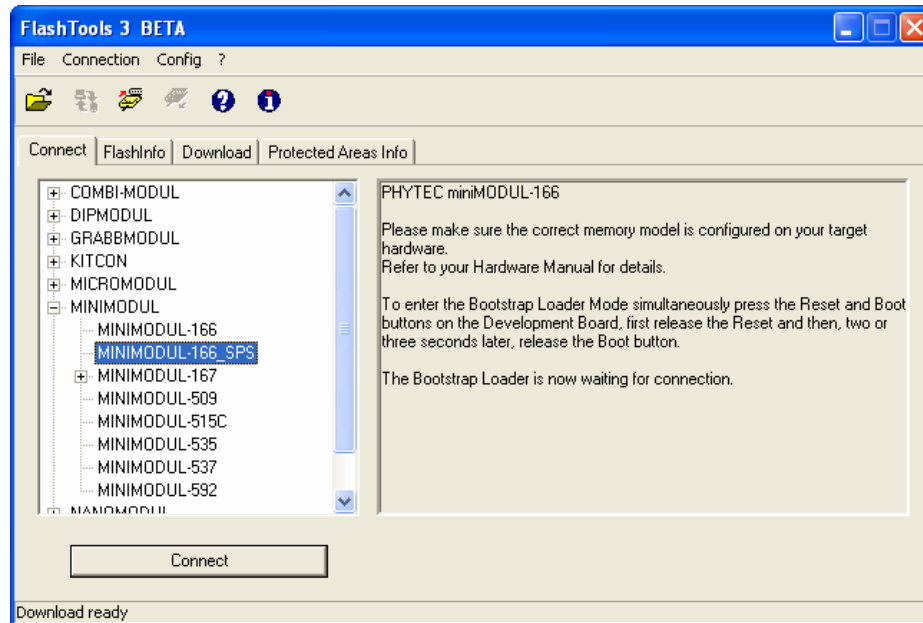
24.03.2005 S. Ruhl

Label:

Download\_2200\_3300\_e.doc

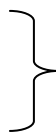
#### 4. Select target

Choose : Connect / Minimodul / Minimodul-166\_SPS aus !



#### 5. Connection from pc to target!

- Switch device off and pull power cord
- Open device
- Connect flatcabel connector to cpu card
- Push power cord and switch device on
- Press both pushbuttons ( near battery )
- Press button „Connect“ on pc
- 1. Release pushbutton near battery
- 2. Release 2. pushbutton



In short time

created (date/name):

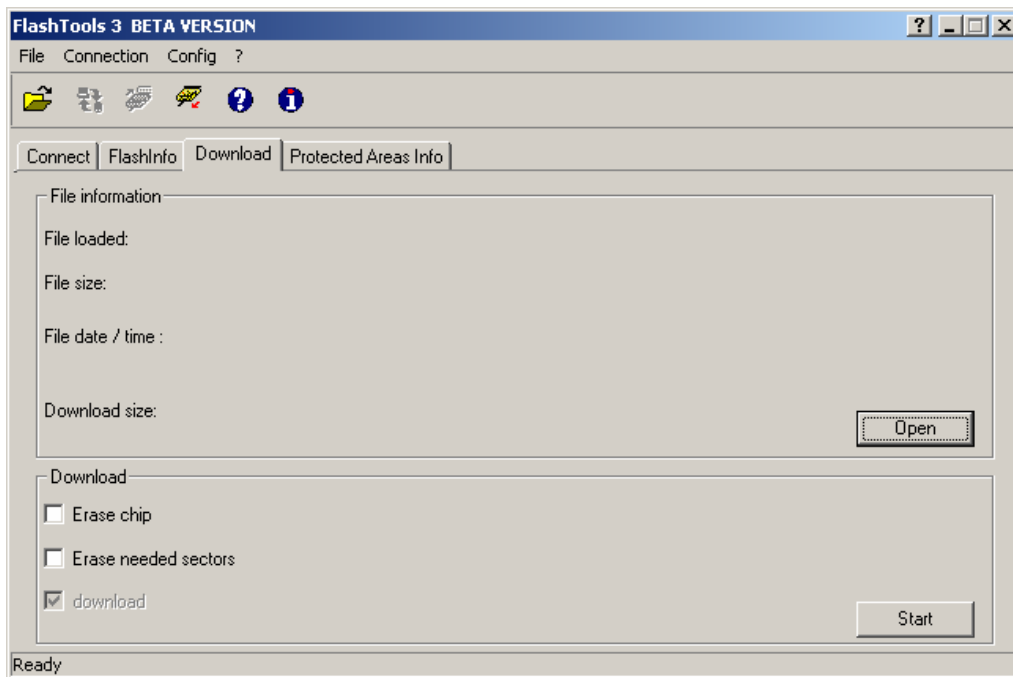
24.03.2005 S. Ruhl

Label:

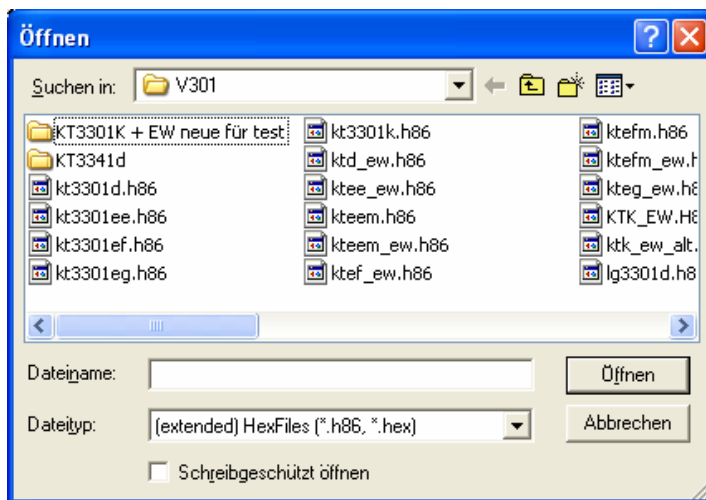
Download\_2200\_3300\_e.doc

## 6. Choose download file

- Select TabSheet „Download“



- Press button „Open“!



- Select file!
- File will be loaded ! ( Wait until loading is ready! )

created (date/name):

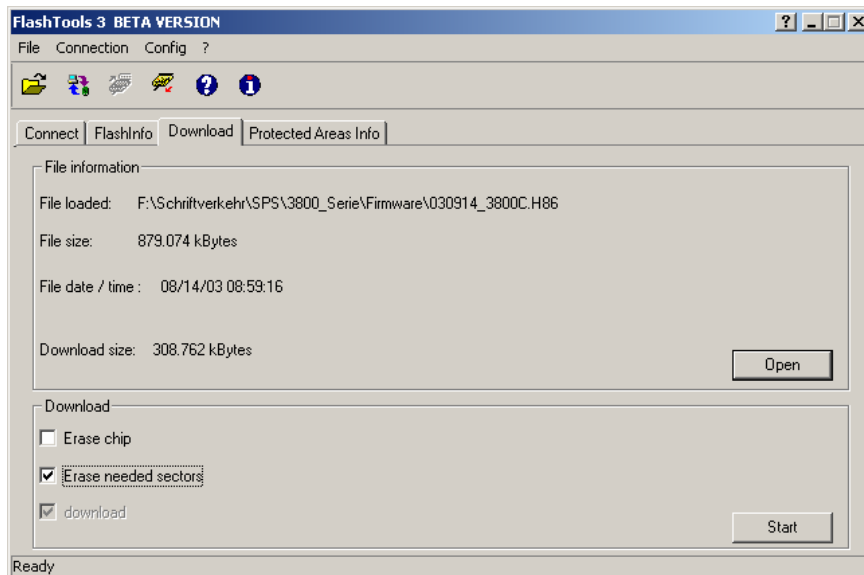
24.03.2005 S. Ruhl

Label:

Download\_2200\_3300\_e.doc

## 7. Start download !

- Select „Erase needed Sectors“



- Press button „Start“ – Download is started
- Wait until download is finished.

## 8. Restart

- Switch device off and pull power cord
- Open device
- Remove flatcabel connector from cpu card
- Close device
- Push power cord and switch device on